

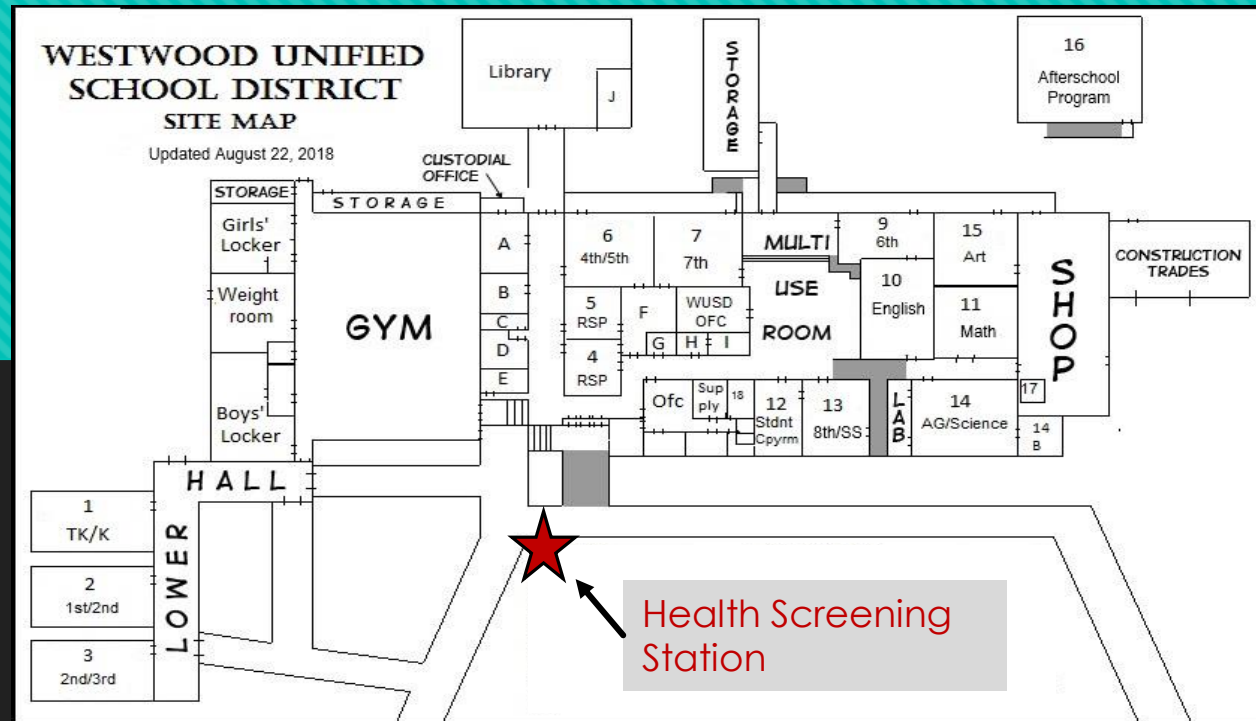
Westwood Unified School District

REOPENING SCHOOLS GUIDANCE AND SCHEDULES

What Families Can Expect When Schools
Reopen
March 8, 2021

Arriving at School

- Every person will need to stop at our **health screening station** for screening of symptoms, a temperature check, and if you have been with someone who has COVID-19. (*Fever is considered 100.4 or higher)
- Children who arrive to school by vehicle will be screened outside their vehicle. Parents are asked to wait until children are cleared. Children who walk or ride a bike will be screened in front of the **health screening station**. If a symptom exist, children will return to their home.



Face Coverings and Social Distancing

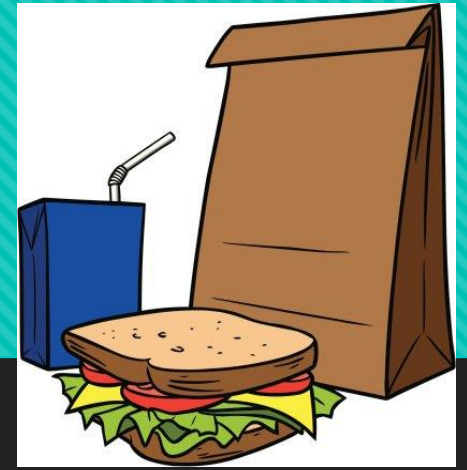
- All TK/K-12 students and all school staff are required to wear a face covering at school.
- Face coverings will be worn inside and outside.
- School will be providing ongoing support for students and staff on how to safely put on and remove the mask to limit their risk of infection.

Face coverings are made available to all students/staff at the health screening station.

- Students and staff will practice physical distancing as practicable.
- Space between seating has been marked at 6 foot distancing.

School Meals

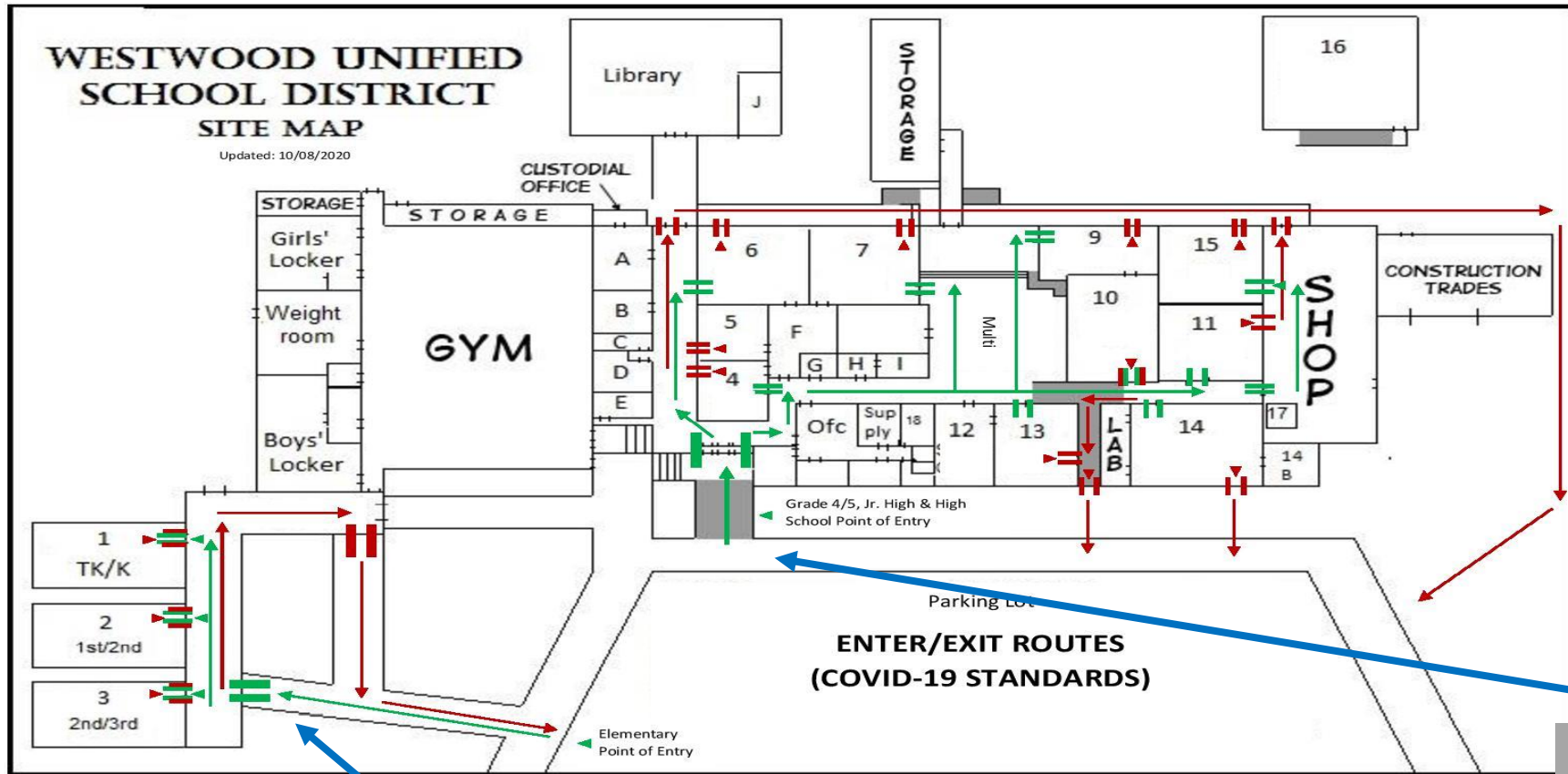
MEALS ARE FREE TO EVERYONE 18 YEARS OLD AND YOUNGER



All meals will be served in a grab-n-go format.

- **On-campus students** will sign up for a meal when they arrive at the health screening station. When dismissed Grades Tk/K-3 will pick up their meal at the elementary exit and grades 4-12 will pick up their meal at the health screening station.
- **Virtual students and distance learners** will sign up for a meal by calling 256-3295 by 9am and will pick their meal up from the cafeteria on Delwood Street between 11:30am and 12:45pm.

ENTER AND EXIT MAP



GREEN = ENTER

RED = EXIT

Elementary Point of Entry

Grade 4/5, Jr. High & High School Point of Entry

SCHEDULES

A/B Cohorts

&

Distant Learners

All arrival, break, and dismissal times are staggered. To maintain stable cohorts, it is important you drop off and pick up your child(ren) at the correct times. **NO EARLY ARRIVALS.**

Seeking 100% Distance Learning?

Please notify the District if you would like to continue in the at home Distance Learning Model.

530-256-2311



In-Person Hybrid Calendar

2021

Westwood Unified School District

HYBRID CALENDAR

BLUE: HOLIDAYS
YELLOW: COHORT A
ORANGE: COHORT B
GREEN: COHORT A & B VIRTUAL LEARNING

Su	Mo	Tu	We	Th	Fr	Sa
	1	2	3	4	5	6
7	8	9	10	11	12	13
14	15	16	17	18	19	20
21	22	23	24	25	26	27
28						

FEB

15: President's Day/No School

Su	Mo	Tu	We	Th	Fr	Sa
	1	2	3	4	5	6
7	8	9	10	11	12	13
14	15	16	17	18	19	20
21	22	23	24	25	26	27
28	29	30	31			

MAR

15: Local Holiday/No School

5, 12, 26: Virtual Learning

Su	Mo	Tu	We	Th	Fr	Sa
				1	2	3
4	5	6	7	8	9	10
11	12	13	14	15	16	17
18	19	20	21	22	23	24
25	26	27	28	29	30	

APR

2-9: Spring Break

16, 23, 30: Virtual Learning

Su	Mo	Tu	We	Th	Fr	Sa
						1
2	3	4	5	6	7	8
9	10	11	12	13	14	15
16	17	18	19	20	21	22
23	24	25	26	27	28	29
30	31					

MAY

3: Local Holiday/No School

28-31: Memorial Day/No School

14, 21: Virtual Learning

Su	Mo	Tu	We	Th	Fr	Sa
		1	2	3	4	5
6	7	8	9	10	11	12
13	14	15	16	17	18	19
20	21	22	23	24	25	26
27	28	29	30			

JUN

11: Last Day of School/Return Materials

Please note the weeks that have Holidays (no school) on Mondays will look different than the traditional A/B week.

Transition Kindergarten/Kindergarten

Day	Cohort	In Person/Virtual	Start Time	Break	Dismissal
Monday	A	In Person	8:30am	10:35am - 10:50am	11:30am
	B	Virtual	12:15pm	N/A	1:15pm
	Distant Learners	Virtual	1:15pm	N/A	1:45pm
Tuesday	B	In Person	8:30am	10:35am - 10:50am	11:30am
	A	Virtual	12:15pm	N/A	1:15pm
	Distant Learners	Virtual	1:15pm	N/A	1:45pm
Wednesday	A	In Person	8:30am	10:35am - 10:50am	11:30am
	B	Virtual	12:15pm	N/A	1:15pm
	Distant Learners	Virtual	1:15pm	N/A	1:45pm
Thursday	B	In Person	8:30am	10:35am - 10:50am	11:30am
	A	Virtual	12:15pm	N/A	1:15pm
	Distant Learners	Virtual	1:15pm	N/A	1:45pm
Friday	A/B & Distant Learners		8:15am - 11:30am		

Ms. Foster

- Cohorts **A** & **B** will be determined by teacher.
- Distance Learners: Virtual learning everyday
- **A/B & Distant Learners (ALL STUDENTS): Virtual learning day (Fridays only)**

1st and 2nd Grade

Day	Cohort	In Person/Virtual	Start Time	Break	Dismissal
Monday	A	In Person	8:00am	9:35am - 9:50am	12:00pm
	B	Virtual	1:00pm	N/A	2:00pm
	Distant Learners	Virtual	2:00pm	N/A	2:30pm
Tuesday	B	In Person	8:00am	9:35am - 9:50am	12:00pm
	A	Virtual	1:00pm	N/A	2:00pm
	Distant Learners	Virtual	2:00pm	N/A	2:30pm
Wednesday	A	In Person	8:00am	9:35am - 9:50am	12:00pm
	B	Virtual	1:00pm	N/A	2:00pm
	Distant Learners	Virtual	2:00pm	N/A	2:30pm
Thursday	B	In Person	8:00am	9:35am - 9:50am	12:00pm
	A	Virtual	1:00pm	N/A	2:00pm
	Distant Learners	Virtual	2:00pm	N/A	2:30pm
Friday	A/B & Distant Learners		8:00am - 2:00pm		

Mrs. Bruns

- **Cohort A:** 1st Grade Students
- **Cohort B:** 2nd Grade Students
- Distance Learners: Virtual learning everyday
- **A/B & Distant Learners (ALL STUDENTS): Virtual learning day (Fridays only)**

2nd and 3rd Grade

Day	Cohort	In Person/Virtual	Start Time	Break	Dismissal
Monday	A	In Person	8:05am	9:55am - 10:10am	12:05pm
	B	Virtual	1:00pm	N/A	2:00pm
	Distant Learners	Virtual	2:00pm	N/A	2:30pm
Tuesday	B	In Person	8:05am	9:55am - 10:10am	12:05pm
	A	Virtual	1:00pm	N/A	2:00pm
	Distant Learners	Virtual	2:00pm	N/A	2:30pm
Wednesday	A	In Person	8:05am	9:55am - 10:10am	12:05pm
	B	Virtual	1:00pm	N/A	2:00pm
	Distant Learners	Virtual	2:00pm	N/A	2:30pm
Thursday	B	In Person	8:05am	9:55am - 10:10am	12:05pm
	A	Virtual	1:00pm	N/A	2:00pm
	Distant Learners	Virtual	2:00pm	N/A	2:30pm
Friday	A/B & Distant Learners		8:00am - 2:00pm		

Mrs. Bates

- **Cohort A:** 2nd Grade Students
- **Cohort B:** 3rd Grade Students
- Distance Learners: Virtual learning everyday
- **A/B & Distant Learners (ALL STUDENTS): Virtual learning day (Fridays only)**

4th and 5th Grade

Day	Cohort	In Person/Virtual	Start Time	Break	Dismissal
Monday	A	In Person	8:00am	10:15am - 10:30am	12:10pm
	B	Virtual	12:30pm	N/A	1:30pm
	Distant Learners	Virtual	1:30pm	N/A	2:00pm
Tuesday	B	In Person	8:00am	10:15am - 10:30am	12:10pm
	A	Virtual	12:30pm	N/A	1:30pm
	Distant Learners	Virtual	1:30pm	N/A	2:30pm
Wednesday	A	In Person	8:00am	10:15am - 10:30am	12:10pm
	B	Virtual	12:30pm	N/A	1:30pm
	Distant Learners	Virtual	1:30pm	N/A	2:00pm
Thursday	B	In Person	8:00am	10:15am - 10:30am	12:10pm
	A	Virtual	12:30pm	N/A	1:30pm
	Distant Learners	Virtual	1:30pm	NA	2:00pm
Friday	A/B & Distant Learners		8:00am - 2:00pm		

Mrs. Heisig

- **Cohort A:** 4th Grade
- **Cohort B:** 5th Grade
- Distance Learners: Virtual learning everyday
- **A/B/Distant Learners (ALL STUDENTS): Virtual learning day (Fridays only)**

6th Grade

Day	Cohort	In Person/Virtual	Start Time	Break	Dismissal
Monday	A	In Person	8:15am	10:15am - 10:30am	12:15pm
	B	Virtual	1:00pm	N/A	1:30pm
	Distant Learners	Virtual	1:30pm	N/A	TBA
Tuesday	B	In Person	8:15am	10:15am - 10:30am	12:15pm
	A	Virtual	1:00pm	N/A	1:30pm
	Distant Learners	Virtual	1:30pm	N/A	TBA
Wednesday	A	In Person	8:15am	10:15am - 10:30am	12:15pm
	B	Virtual	1:00pm	N/A	1:30pm
	Distant Learners	Virtual	1:30pm	N/A	TBA
Thursday	B	In Person	8:15am	10:15am - 10:30am	12:15pm
	A	Virtual	1:00pm	N/A	1:30pm
	Distant Learners	Virtual	1:30pm	N/A	TBA
Friday	A/B & Distant Learners		9:00am - 11:30am		

Mr. Foy

- Cohorts **A** & **B** will be determined by teacher.
- Distance Learners: Virtual learning everyday
- **A/B & Distant Learners (ALL STUDENTS): Virtual learning day (Fridays only)**

7th Grade

Day	Cohort	In Person/Virtual	Start Time	Break	Dismissal
Monday	A	In Person	8:20am	10:35am - 10:50am	12:20pm
	B	Virtual	1:00pm	N/A	1:30pm
	Distant Learners	Virtual	1:30pm	N/A	TBA
Tuesday	B	In Person	8:20am	10:35am - 10:50am	12:20pm
	A	Virtual	1:00pm	N/A	1:30pm
	Distant Learners	Virtual	1:30pm	N/A	TBA
Wednesday	A	In Person	8:20am	10:35am - 10:50am	12:20pm
	B	Virtual	1:00pm	N/A	1:30pm
	Distant Learners	Virtual	1:30pm	N/A	TBA
Thursday	B	In Person	8:20am	10:35am - 10:50am	12:20pm
	A	Virtual	1:00pm	N/A	1:30pm
	Distant Learners	Virtual	1:30pm	N/A	TBA
Friday	A/B & Distant Learners		9:00am - 12:00am		

Mrs. Gibbs

- Cohorts **A** & **B** will be determined by teacher.
- Distance Learners: Virtual learning everyday
- **A/B & Distant Learners (ALL STUDENTS): Virtual learning day (Fridays only)**

8th Grade

Day	Cohort	In Person/Virtual	Start Time	Break	Dismissal
Monday	A	In Person	8:25am	9:55am - 10:10am	12:25pm
	B	Virtual	8:25am	9:55am - 10:10am	12:25pm
	Distant Learners	Virtual	8:25am	9:55am - 10:10am	12:25pm
Tuesday	B	In Person	8:25am	9:55am - 10:10am	12:25pm
	A	Virtual	8:25am	9:55am - 10:10am	12:25pm
	Distant Learners	Virtual	8:25am	9:55am - 10:10am	12:25pm
Wednesday	A	In Person	8:25am	9:55am - 10:10am	12:25pm
	B	Virtual	8:25am	9:55am - 10:10am	12:25pm
	Distant Learners	Virtual	8:25am	9:55am - 10:10am	12:25pm
Thursday	B	In Person	8:25am	9:55am - 10:10am	12:25pm
	A	Virtual	8:25am	9:55am - 10:10am	12:25pm
	Distant Learners	Virtual	8:25am	9:55am - 10:10am	12:25pm
Friday	A/B & Distant Learners		8:30am - 12:30am		

Mrs. Biggs

- Cohorts **A** & **B** will be determined by teacher.
- Distance Learners: Virtual learning everyday
- **A/B & Distant Learners (ALL STUDENTS): Virtual learning day (Fridays only)**

Period Time		Monday			Tuesday			Wednesday			Thursday			Friday
		Cohort A	Cohort B	Distant Learners	Cohort A	Cohort B	Distant Learners	Cohort A	Cohort B	Distant Learners	Cohort A	Cohort B	Distant Learners	Cohort A/B & Distant Learners
1st	8:30am - 9:05am	On Campus	Virtual	Virtual	Virtual	On Campus	Virtual	On Campus	Virtual	Virtual	Virtual	On Campus	Virtual	Virtual Learning
2nd	9:05am - 9:40am	On Campus	Virtual	Virtual	Virtual	On Campus	Virtual	On Campus	Virtual	Virtual	Virtual	On Campus	Virtual	Virtual Learning
3rd	9:40am - 10:15am	On Campus	Virtual	Virtual	Virtual	On Campus	Virtual	On Campus	Virtual	Virtual	Virtual	On Campus	Virtual	Virtual Learning
4th	10:15am - 10:50am	On Campus	Virtual	Virtual	Virtual	On Campus	Virtual	On Campus	Virtual	Virtual	Virtual	On Campus	Virtual	Virtual Learning
5th	10:50am - 11:25am	On Campus	Virtual	Virtual	Virtual	On Campus	Virtual	On Campus	Virtual	Virtual	Virtual	On Campus	Virtual	Virtual Learning
6th	11:25am - 12:00pm	On Campus	Virtual	Virtual	Virtual	On Campus	Virtual	On Campus	Virtual	Virtual	Virtual	On Campus	Virtual	Virtual Learning
7th	12:00pm - 12:35pm	On Campus	Virtual	Virtual	Virtual	On Campus	Virtual	On Campus	Virtual	Virtual	Virtual	On Campus	Virtual	Virtual Learning

- **Cohort A:** Last Names A-L
- **Cohort B:** Last Names M-Z
- Distance Learners: Virtual learning everyday
- **A/B & Distant Learners (ALL STUDENTS): Virtual learning day (Fridays only)**

Additional Information



All students are encouraged to bring their own water bottle to campus.

- There are handwashing stations located in the entry of the main entrance and the multi-purpose room. Students will wash their hands and fill water bottles at these locations. Hand sanitizer is available in all classrooms.
- High School students will use the bathroom in the gym. Jr. High and 4th/5th grade will use the bathrooms located near the Special Education classroom. TK/K, 1st, 2nd, 3rd will use the bathrooms located in their classrooms.
- Classrooms and bathrooms will be disinfected and cleaned daily. Students will be given hand sanitizer. Teachers are equipped with sanitizing wipes, cleaner, paper towels and gloves for students to use if supplies have been inadvertently shared.
- If a teacher/student/staff member is positive for COVID-19, and following consultation with local health officers the school may be closed up to 14 days and we will return to a Distance Learning Model.
- Communication is still our priority. The following will be used to communicate: Teachers will use Google Classroom, text messages or calls to parents. The district will use the “all call” system, webpage, and Facebook.
- Please visit our website at www.westwoodusd.org for updates, documents, and trainings.